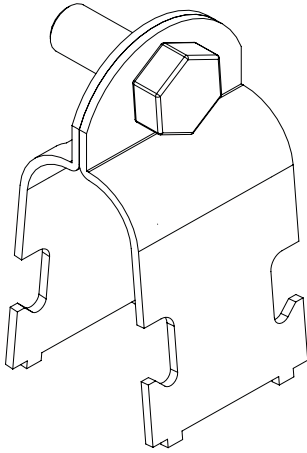




CLAMP BFT



Models: 20, 25, 32, 40, 50.

Finishes: HDG.

Characteristics:

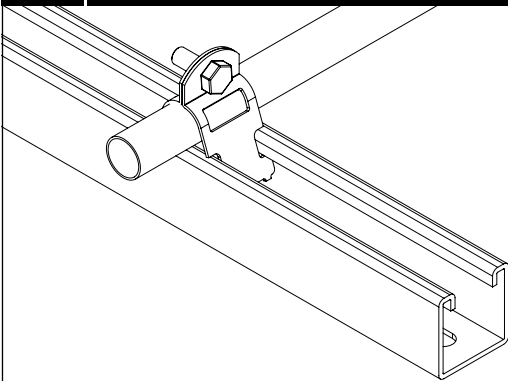
- Metallic
- Non-Flame propagating component
- Electrically conductive component
- With metallic coating. Resistance to Corrosion:

Coating HDG: class 6

Diameter ranges:

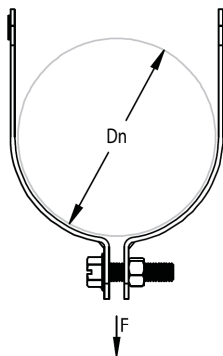
- 1/2": 20,5 ~ 21,4 mm
- 3/4": 25,4 ~ 26,9 mm
- 1": 32,8 ~ 33,4 mm
- 1 1/4": 41,3 ~ 42,4 mm
- 1 1/2": 47,6 ~ 50 mm
- 2": 59,5 ~ 62,2 mm
- 2 1/2": 69,9 ~ 73,0 mm
- 3": 84,0 ~ 88,9 mm
- 4": 111,1 ~ 115,3 mm

ASSEMBLING INSTRUCTIONS



- Clamp BFT is used to fix conduits, pipes, or high diameter wires to any profile of 41/82 range: 41x21, 41x41 ó 82x41.
- The clamp unit include one bolt&nut required for the assembly. Therefore, additional hardware is not needed.

SAFE WORKING LOAD



Dn	F
mm	kg
1/2"	2000
3/4"	2000
1"	2000
1 1/4"	2670
1 1/2"	2670
2"	3780
2 1/2"	3780
3"	3780
4"	3780

Related products:

Profiles and accessories of BASORFIX 41/82.